



FILTER PAD LIFE INDICATOR

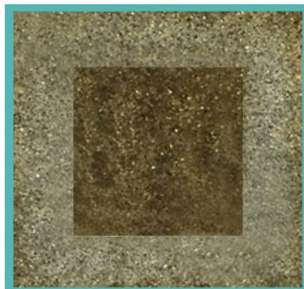


Estimated Filter Pad Life Over Appliances	
Appliance	Filter Pad Life Range
Chargrill	2 to 7 Days
Griddle	7 to 14 Days
Fryer	1 to 2 Months
Stove	1 to 2 Months
Range	1 to 2 Months
Other	1 to 2 Months

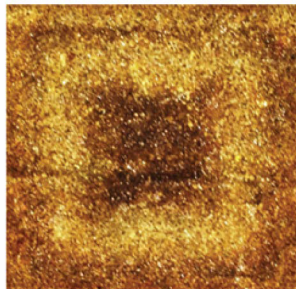
Below is a visual representation of typical changes in color as filter pads become saturated with grease.



0% Saturated



25% Saturated



75% Saturated



100% Saturated

NOTE: Grease load on filter pads may vary in color over different appliances.



ONGOING PREVENTATIVE MAINTENANCE CHECKLIST



CLEAN METAL FRAMES WITHOUT FILTER PADS INSTALLED

GRILLS: 2X-4X PER MONTH
OTHER APPLIANCES: 1X PER MONTH



WIPE DOWN FRONT COVERS & HOOD
EVERY NIGHT



Email: Sales@GreaseLock.com
Phone: 800.828.9638
Website: GreaseLock.com